

## X300 Pro3 **User Manual**

### **Statement**

This handbook is the manual of X300 Pro3. Without the written permission from the manufacturer, any company or individual shall not copy or backup it in any form (electronic, mechanical, photocopying, recording or otherwise). This manual is only operating instructions for X300 Pro3. If any result caused by using it on other equipment, the company does not assume any responsibility for it.

If not quality problems of X300 Pro3 such as equipment failure caused by user abuse or misuse, unauthorized disassembly, repair equipment yourself, not operate or maintain by the instructions, lose it, the repair will not be free. Other product names mentioned in this manual are in order to describe how to use X300 Pro3, and their copyrights are still observed by the original company.

X300 Pro3 and files are used for normal vehicles maintenance. If used for illegal purposes, the company does not assume legal responsibility.

---

Content

Chapter 1 : Summary.....	1
1.1 Features.....	1
1.1.1 Advantages.....	1
1.1.2 Durability.....	1
1.2 Introduction of the device.....	2
1.2.1 The main unit and accessories.....	2
1.3 Hardware technical specification.....	3
1.4 Functions Setting.....	3
1.4.1 Functions Selection.....	4
1.4.2 System Setting.....	4
1.4.2.1 Language Selection.....	4
1.4.2.2 Contrast Adjustment.....	5
1.4.2.3 Font Setting.....	5
1.4.2.4 Metric/Inch.....	
1.4.2.5 Data Logging.....	
1.4.3 System Information.....	5
1.4.4 Device Self-test.....	6
Chapter 2: How to update software for X300 PRO3.....	6
2.1 Update Tool software Installation.....	7
2.2 Software Updating.....	8

## Chapter 1: Summary

### 1.1.Features

#### 1.1.1. Advantages

Multi-language environment can be applied in different countries and regions.

The main unit system adopts ARM high speed chip to keep it running fast, stable and anti-jamming.

Updating via SD card at any moment.

Modern design and high-definition true color screen realize the integration of automotive industry and electronic information technologies and make auto diagnosis and key programming easier, practical and economical.

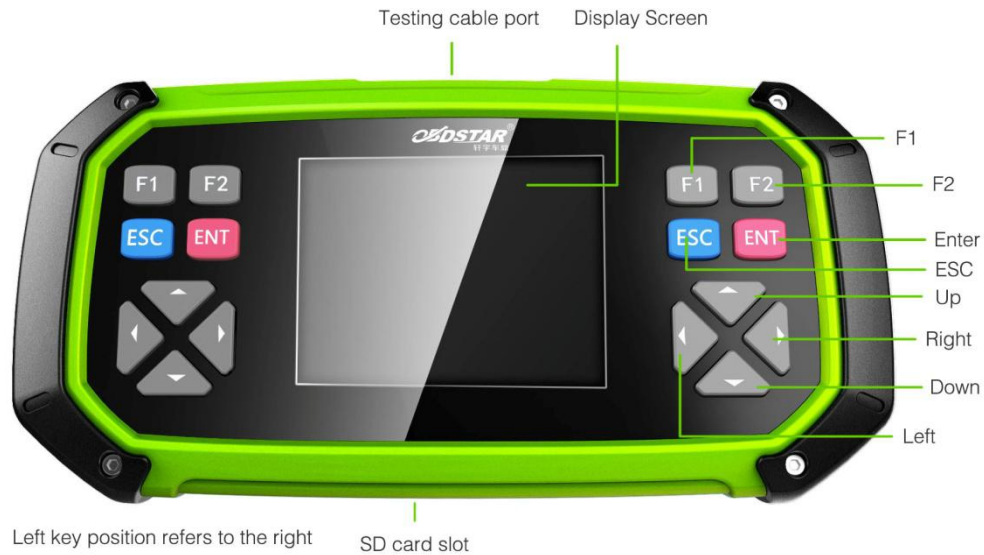
#### 1.1.2 Durability

Integrity structure design makes it crack resistance, shock resistance and durable.

Industrial design ensures the tool work stably under tough environment, such as high and low temperatures.

## 1.2 Introduction of the device

### 1.2.1 The main unit and accessories(Picture as below)



Name	Instruction
Testing cable port	Connect to the main test cable for auto key programming
Display Screen	Show information
F1	Keyboard input option key
F2	Keyboard input option key
Enter	OK
ESC	Exit or give up
Up	Up
Right	To right
Down	Down
Left	To left
TF card slot	To keep diagnostic program or data

### 1.3 Hardware technical specification

Dimension: 23.9cm(L)\*12cm(W)\*3.6cm(H)

CPU :ARM7

Power Supply:DC12V

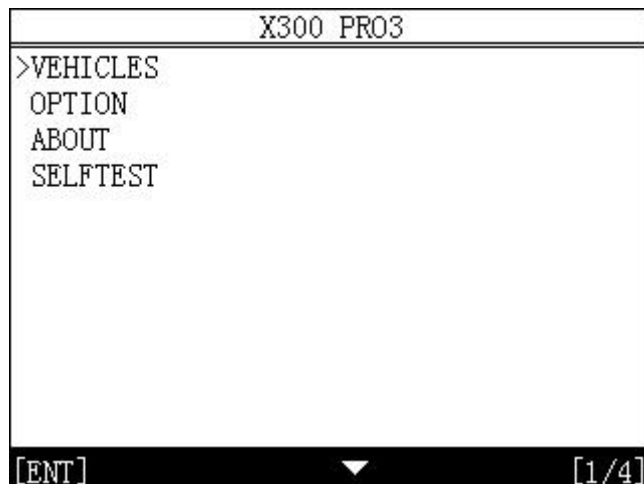
Operation Power:DC12V

Operation Temperature: -20~60

Display Screen:320\*240 TFT Screen

### 1.4 Functions Setting

Power on and then press **ENTER** on the screen then go to the function setting, setting information as shown below:



#### 1.4.1 Function Selection

---

Select different functions according to different requirements.

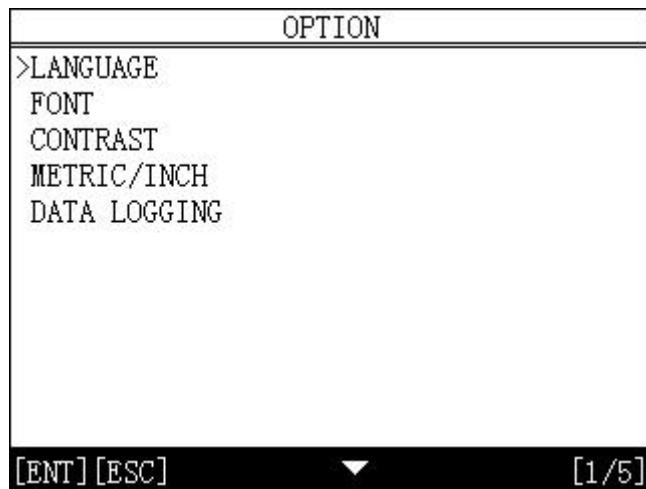
```
VEHICLES
>ABS BLEED
BATTERY MATCH
CVT LEARNING VALUE RESET
EPB (PBM)
GEAR LEARNING
IMMOBILISER
MILEAGE ADJUSTMENT
OBDII
OIL/SERVER RESET
SRS RESET
STEERING ANGLE RESET
[ENT] [ESC]  ▾▶ [1/13]
```

Note: Software numbers and functions are different according to different product configuration. Further detailed information, please contact your distributor.

#### 1.4.2 System Setting

---

Select System Setting, language and contrast can be adjusted, as shown below:



#### 1.4.2.1 Language Selection

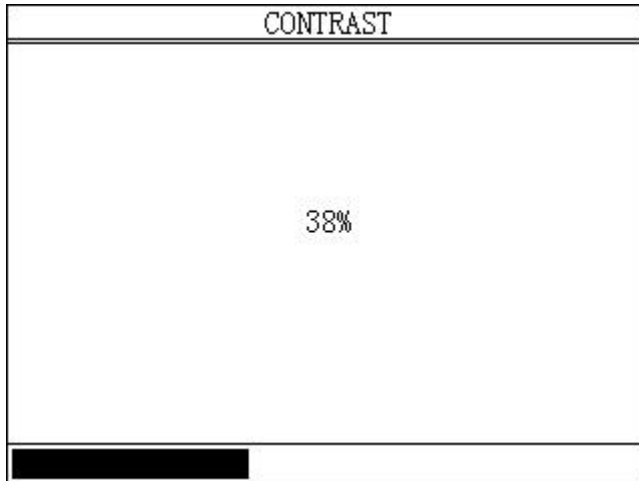
This device supports simplified Chinese, traditional Chinese, English, Russia, Greek, Spanish, Italian. In the language directory, select required language by Up and Down and press ENTER to confirm it.



#### 1.4.2.2 Contrast

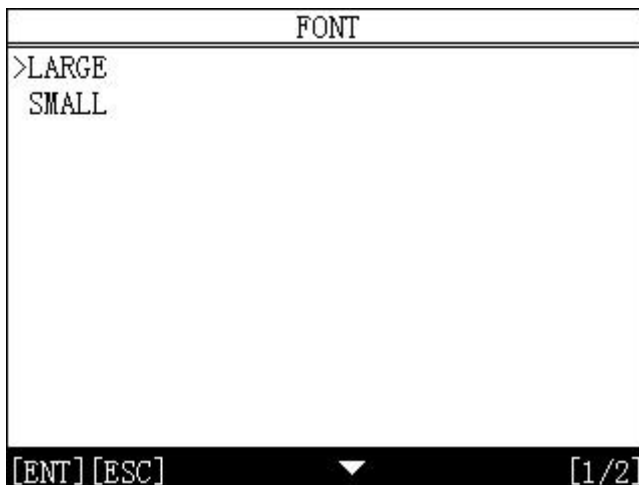
**According to** the environment, adjust the brightness of the screen by the left and right buttons, as shown below:





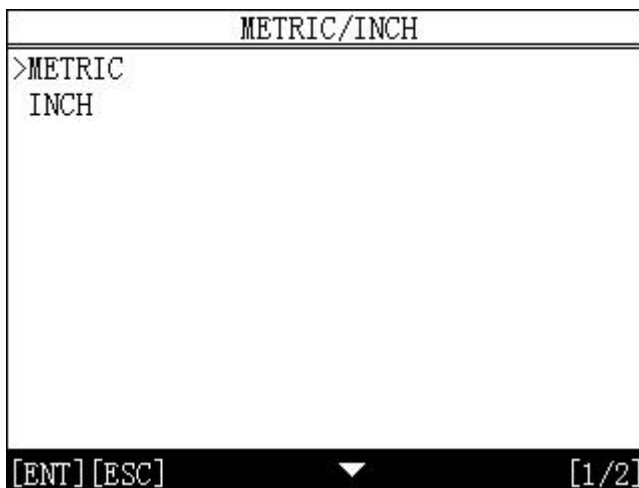
#### 1.4.2.3 Font Setting

According to requirement, select different font.



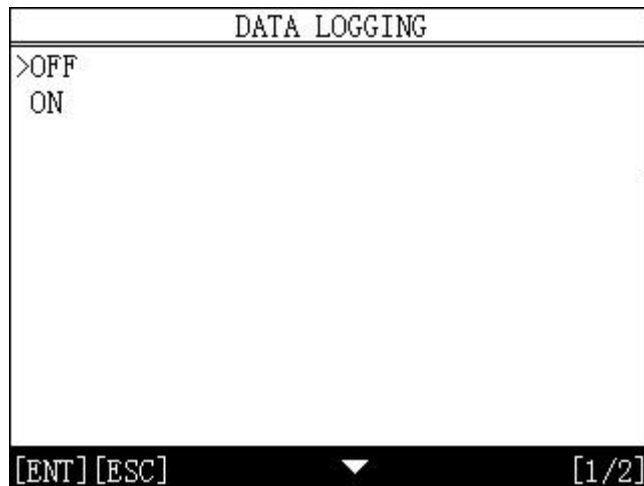
#### 1.4.2.4 Metric/Inch

According to different requirements, select the Metric/Inch by the up and down keys, and press ENTER to confirm as show below,



#### 1.4.2.5 Data Logging

Any problems during testing, please use the Data Logging function to record the test process and send the data to us. Select ON by the up and down keys and press ENTER to confirm, shown as below,



Note: Every time you need to select ON if you want to record the data before testing car.

### 1.4.3 System Information

System information includes product serial number, hardware version, software version, release date, register password, etc.



#### 1.4.4 Device Self-test

Device self-test includes screen display, keyboard testing, hardware self-testing, etc. If it cannot show enough pictures on the screen, keyboard not work, and hardware self-test not get through, please return this X300 Pro3 to the manufacturer.

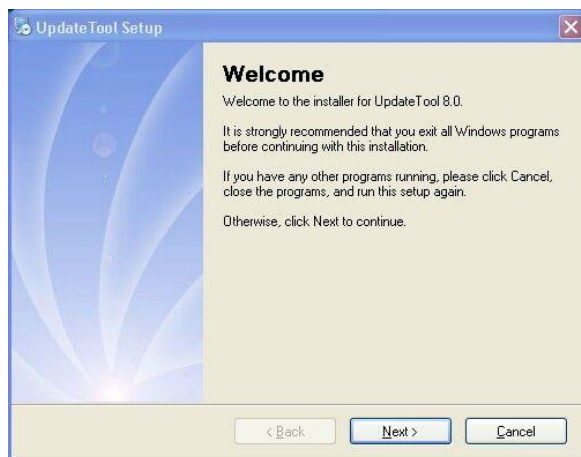


## Chapter 2: How to update software for X300 Pro3

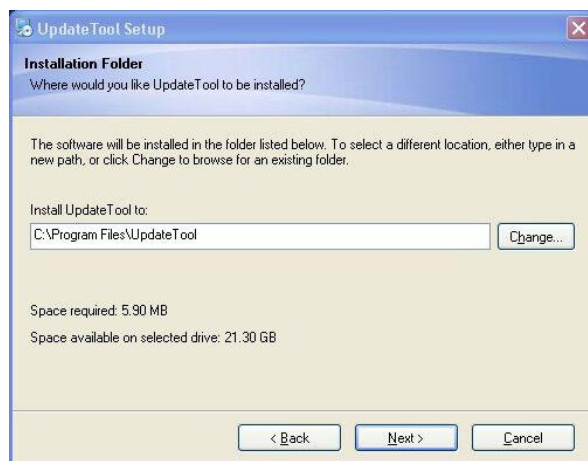
### 2.1 Update Tool software installation

Download the update tool and diagnostic software on [www.obdstar.com](http://www.obdstar.com), double click , then go to the next step:

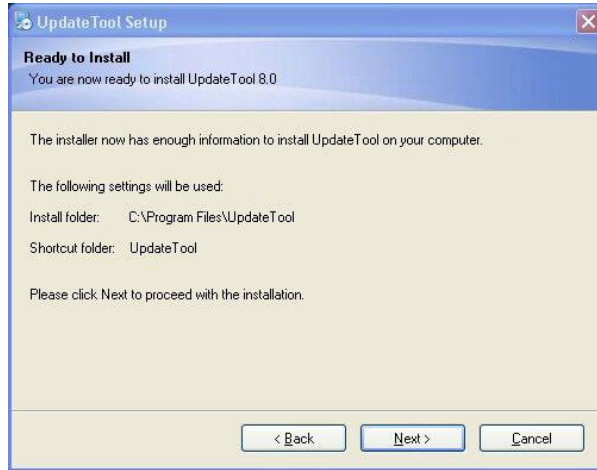
#### Step 1 Click "Next"



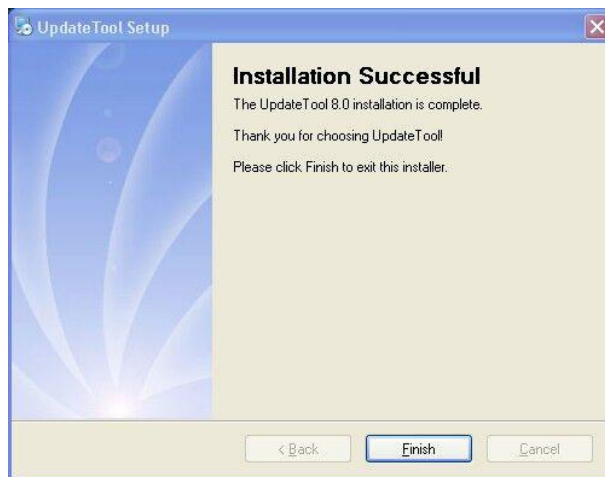
#### Step 2: Click "Next"



### Step 3: Click "Next"

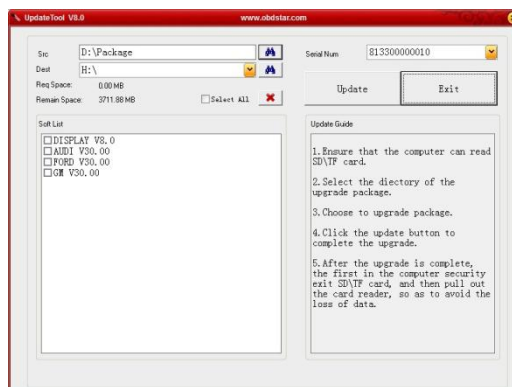


### Step 4: Click "Finish"



## 2.2 Software Updating

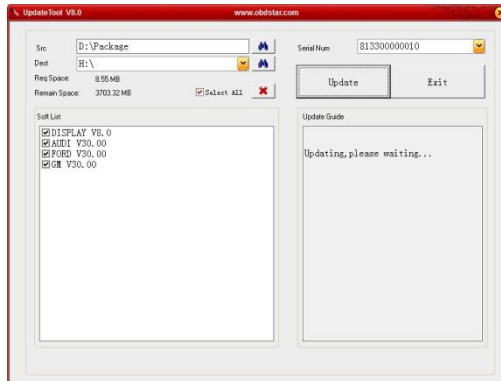
After  
the



Update Tool installation completed, click the Update Tool software icon on desktop to start update tools. Operation steps as following:

Step 1 Open update tool

Step 2  
it and



Click the source menu, choose the program you want to update, click confirm

Step 3: Click and select all the software then click "update"

Step 4: Wait for several minutes then the updating finished

**Note** For new update software and questions during updating, please contact your distributor.

