

X-100 PRO User Manual

Statement:

This handbook is the manual of X-100 PRO. Without the written permission from the manufacturer, any company or individual shall not copy or backup it in any form (electronic, mechanical, photocopying, recording or otherwise). This manual is only operating instructions for X100 PRO. If any result caused by using it on other equipment, the company does not assume any responsibility for it.

If not quality problems of X-100 PRO: such as equipment failure caused by user abuse or misuse, unauthorized disassembly, repair equipment yourself, not operate or maintain by the instructions, lose it, the repair will not be free. Other product names mentioned in this manual are in order to describe how to use X-100 PRO, and their owners are still the original company.

X-100 PRO and files are used for normal vehicles maintenance; If used for illegal purposes, the company does not assume any liability.

Content

Chapter1:Summary.....	1
1.1 Features.....	1
1.1.1 Universal.....	1
1.1.2 Advantages.....	1
1.1.3 Durability.....	1
1.2 Introduction of the device.....	2
1.2.1 The main unit and accessories.....	2
1.3 Hardware technical specification.....	3
1.4 Functions setting.....	3
1.4.1 System setting.....	4
1.4.1.1 Language selected.....	4
1.4.1.2 Contrast adjustment.....	4
1.4.1.3 Metric/Inch.....	5
1.4.1.4 Data logging.....	5
1.4.2 System information.....	6
1.4.3 Device self test.....	6
Chapter2: How to update software for X-100 PRO.....	7
2.1 Update tool software installation.....	7
2.2 Register.....	10
2.3 Software updating.....	11

Chapter1: Summary

1.1 Features

1.1.1 Universal

1.1.2 Advantages

- Providing multi-language environment so it can be used in different countries and regions.
- The main unit system uses ARM high-speed chip to keep it running fast, stable, and anti-jamming.
- Support updating via TF card. You can update the software at any time.
- With modern design and high-definition true color screen to realize the integration of automotive industry and electronic information technologies and make auto diagnostic and key programming more easier, practical and economical.

1.1.3 Durability

- Integrity structure design, Drop and Shock Resistance, and durable.
- Industrial design to ensure the tool work stable in harsh environment such as high temperature, low temperature, etc.

1.2 The introduction of the device

1.2.1 The Main unit and accessories (picture as below)



Name	Instruction
Testing cable interface	Connect to the main testing cable for key programming
USB interface	For connecting USB cable
TF Card Slot	To store diagnostic program and data
F1	Keyboard input option key
Left	To left
Enter	OK
ESC	Exit or give up
Screen	Show information
F2	Other functions option
Up	Up
Right	To right
Down	Down

1.3 Hardware Specification

- ★ Dimension: 19.2cm(L) *9.3cm(W) *2.9cm(H)
- ★ CPU: ARM7
- ★ Power Supply: DC12V
- ★ Operation Power: DC12V
- ★ Operating Temperature: -10~60°C
- ★ Display Screen: 160×160 TFT Screen

1.4 Functions Setting

Power on, and then press ENTER on the screen, then go to the function setting, setting information as shown below:

X-100 PRO
>Vehicles Option About Selftest

1.4.1 System Setting

Select System Setting, then you can set the language,contrast, Metric / Inch, data logging, as shown below:

Option
>Language Contrast Metric / Inch Data Logging

1.4.1.1 Language option

The device supports Chinese , English,Portuguese, Russian, Spanish, and Traditional Chinese etc.

1.4.1.2 Contrast

According to the environment, adjust the brightness of the screen by the left and right buttons, as shown below:

Option
70%

1.4.1.3 Metric / Inch

According to your needs, select the Metric/Inch through the up and down keys, and press ENTER to switch, as shown below:

Metric / Inch
>Metric Inch

1.4.1.4 Data Logging

If you have problems during the testing, please use the Data Recording function to record the testing process and send the data to us. If you want to use Data Record function, select "ON" by the up and down keys and press ENTER to switch, as shown below:

Note:Please select "OFF", otherwise there will be not enough capacity in TF card after using it for a long time.

Data Logging
>OFF ON

1.4.2 System Information

System information includes product serial number, hardware version, software version, release date, register password, etc.

About
>S/N: 813300000010 Hardware Version: 3.23 Software Version: 3.00 Release Date: 2015/03/03 Password: 12044354 www.obdstar.com

1.4.3 Device self test

Device self test includes screen display, keyboard test.

hardware self test, etc. If it cannot show enough pictures on the screen, keyboard not work, and hardware self test not get through, please return this X-100 PRO to the manufacturer.

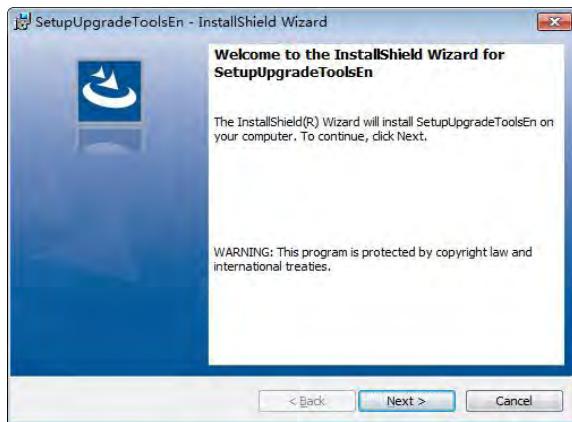
Self test
>Display test Keypad test

Chapter 2: How to update software for X-100 PRO

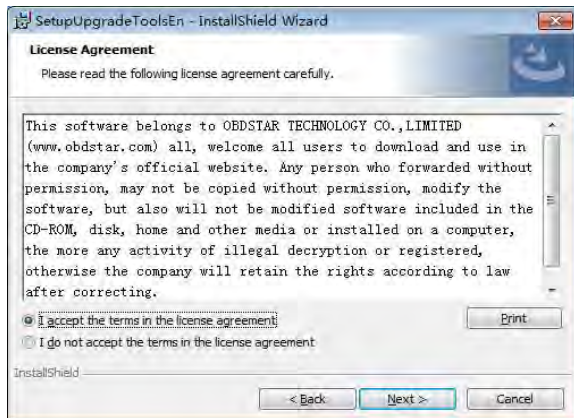
2.1 Update tool software installation

Long in our website:<http://en.obdstar.com> and click “One key Upgrade”.
Download the update tool and diagnostic software,double click,then go to the next step:

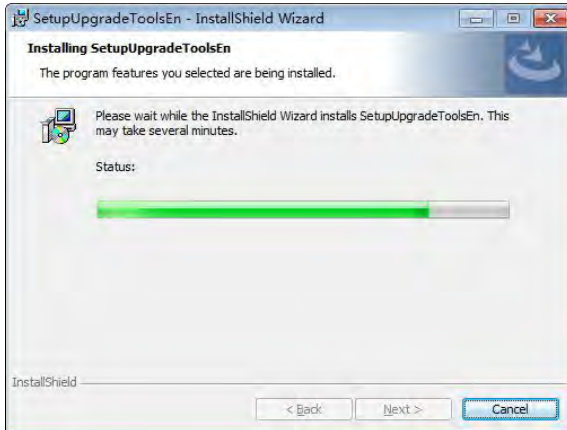
Step 1: Click “Next”



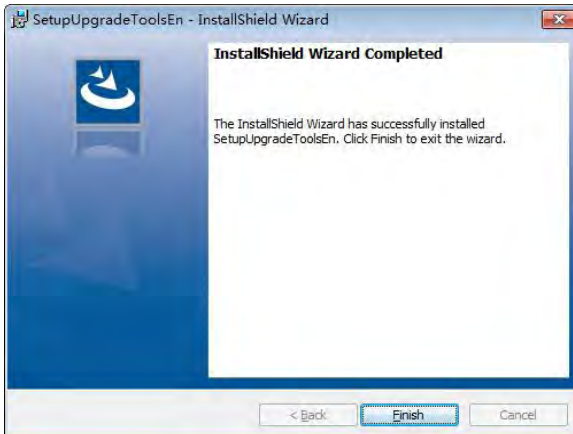
Step 2: Click “Next”




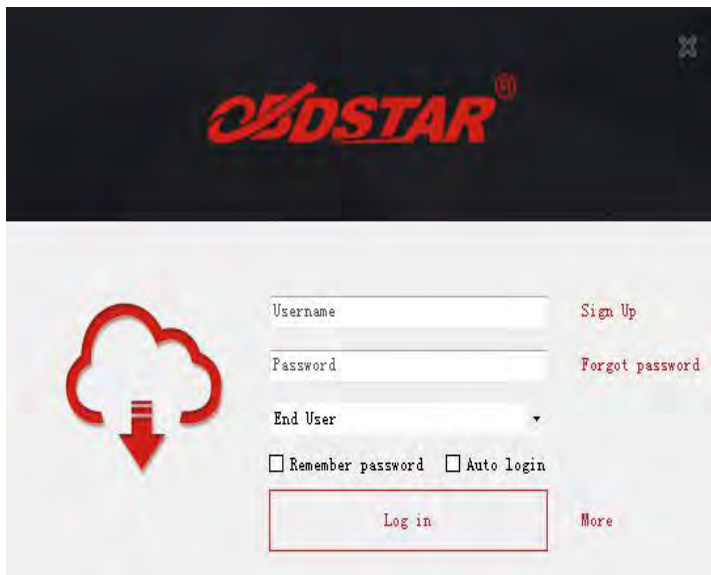
Step 3: Wait for several minutes then the installation finished



Step 4: Click “Finish”



After Update Tool installation completed, click the Update Tool  software icon on desktop to start the update tools. The main interface is as shown below:



2.2 Register

Click “Sign up” to fill in user information. Username can be English characters or the combination of alphabet and numbers. Serial number and register password can be referred to System information in the device.(Figure 1.4.3)

User Login

Register

Get User && Password

Registered Types: Product User

Product serial number:

Register password:

Distributor code:

User name:

Your password:

Password:

Email:

Contacts:

Company name: (unnecessary)

Contact address: (unnecessary)

Contact phone number: (unnecessary)

Register

Contact Details:

Tel.: 0089 755 86707161

Email: Leo@obdstar.com

Skype: obdstar98

Attn: Leo

2.3 Software updating

Operation steps as following:

Step 1: Remove the TF card from your device.

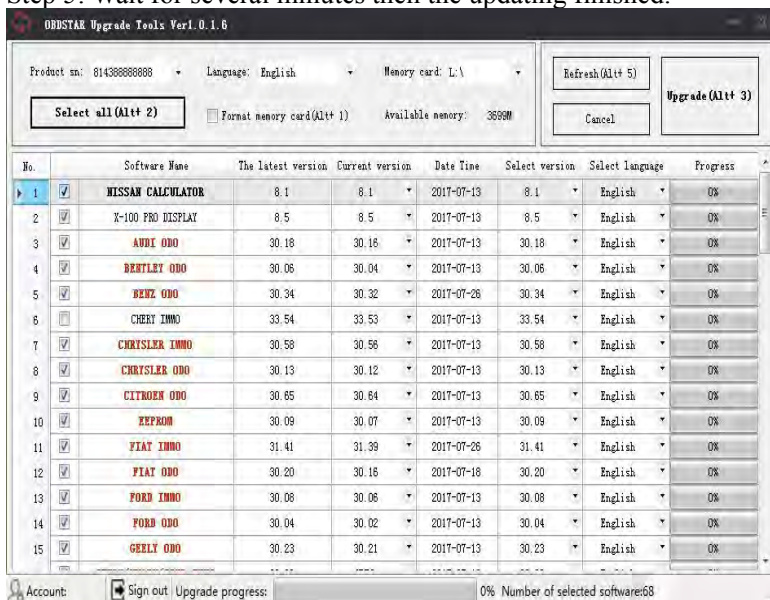
Insert your TF card into computer.

Step 2: Open update tool and login

Step 3: Click the source menu, choose the program you want to update, click it and confirm.

Step 4: Click and select all the software then click “update”.

Step 5: Wait for several minutes then the updating finished.



Note: For new update software and questions during updating, please contact your distributor.